



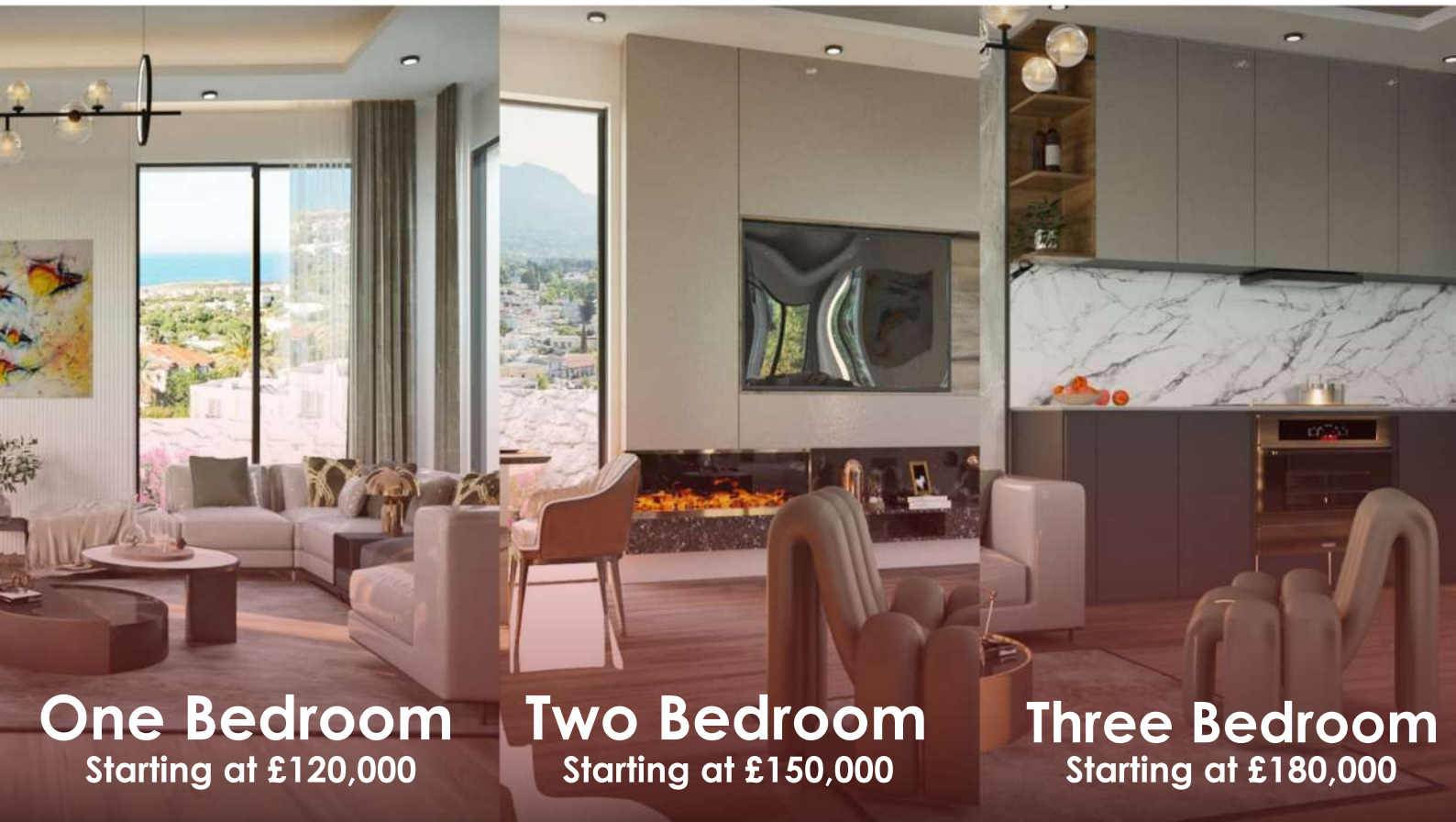
**SELECT ESTATES**  
INTERNATIONAL



# Lapta Prestige Homes

**300 meters from the sea**

A neighborhood like no other with all these amenities at just a few meters.



**One Bedroom**  
Starting at £120,000

**Two Bedroom**  
Starting at £150,000

**Three Bedroom**  
Starting at £180,000

# 300m

meters from the sea.

# 28

total units.

# 12km

distance from kyrenia.

## Lapta

A modern living space located 300 m from sea and shore trail.

Lapta Prestige Homes located with walking distance to the shops, sea front restaurants, public transport and either 15 minutes from.



Lapta makes it on the top of list of our favourite areas to invest in North Cyprus, thanks to its beautiful beaches, popular shore trail and favourite seafront restaurants.

Lapta is promising to become vibrant expat community home.

## Pre Launch Prices

Lapta Prestige Homes is a home buyers dream. It's a secure gated luxury complex with communal pool offering best value for the money at sought-after area.



# LOCATION - LOCATION - LOCATION

Lapta is a coastal town in North Cyprus, with a coastline spanning over 3KM, just West of Kyrenia.

This popular town offers social facilities such as Restaurants, Schools, Hospitals, Beaches, and a small Fishing Harbour. Due to it being so peaceful, it has become a popular residential area for ex-pat communities.



With plans in place for the New Marina project, expected to be completed within the next few years, Lapta really is an up-and-coming HOT SPOT.

Prestige homes is 300 Meters from the Sea front, offering incredible Sea and Mountain views. You can easily walk to a variety of restaurants located on the Sea front, such as Silver Rocks, Ezic Lapta & many more.

Lapta hosts several private, & public beaches such as, Driftwood Beach, LA beach, Celebrity beach, Sunas beach club which are only 600meters away in addition, to being able to access the popular coastal walkway which winds along the Lapta coastline.





# Lapta Prestige Homes

The Secure Gated Development offers 28 units with Landscaped gardens and communal swimming pool. With an impeccable design, the architects have utilised the space and have taken advantage of the gorgeous location and surrounding groves.



At Select Estates International we can offer you **EXCLUSIVE PRE-LAUNCH PRICES** for a limited time only, which will provide you with a great return on your investment. With properties in this area in high demand, it really is an opportunity you do not want to miss out on...

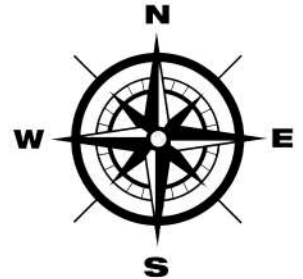
With the planned Lapta Marina project only 1.7 km away and Lapta center which is a bustle of local markets, barbers & traditional buildings only 3.5km from the project.



You will also find Mare Monte Public Beach, 7m away and the luxurious Merit Royal Hotel and Casino only 7.4 km. Kyrenia City Centre and the State Hospital is 19km and you can fly into either Ercan Airport which is 58 km or Larnaca Airport which is 93km.

Lapta Prestige Homes is a **MUST SEE**. For more information on this luxury development or to place a reservation with our pre-launch prices, please feel free to contact us.

# SEA



## A1

No	Room	Floor	Price
1	2+1	Ground	£150,000
2	1+1	Ground	£120,000
3	1+1	Ground	£120,000
4	2+1	Ground	£150,000
5	2+1	First	£150,000
6	1+1	First	£120,000
7	1+1	First	£120,000
8	2+1	First	£150,000

## B2

No	Room	Floor	Price
1	3+1	Ground	£220,000
2	3+1	Ground	£220,000
3	2+1	First	£180,000
4	2+1	First	£180,000

## A2

No	Room	Floor	Price
1	2+1	Ground	£150,000
2	1+1	Ground	£120,000
3	1+1	Ground	£120,000
4	2+1	Ground	£150,000
5	2+1	First	£150,000
6	1+1	First	£120,000
7	1+1	First	£120,000
8	2+1	First	£150,000

## B1

No	Room	Floor	Price
1	3+1	Ground	£220,000
2	3+1	Ground	£220,000
3	2+1	First	£180,000
4	2+1	First	£180,000

## B3

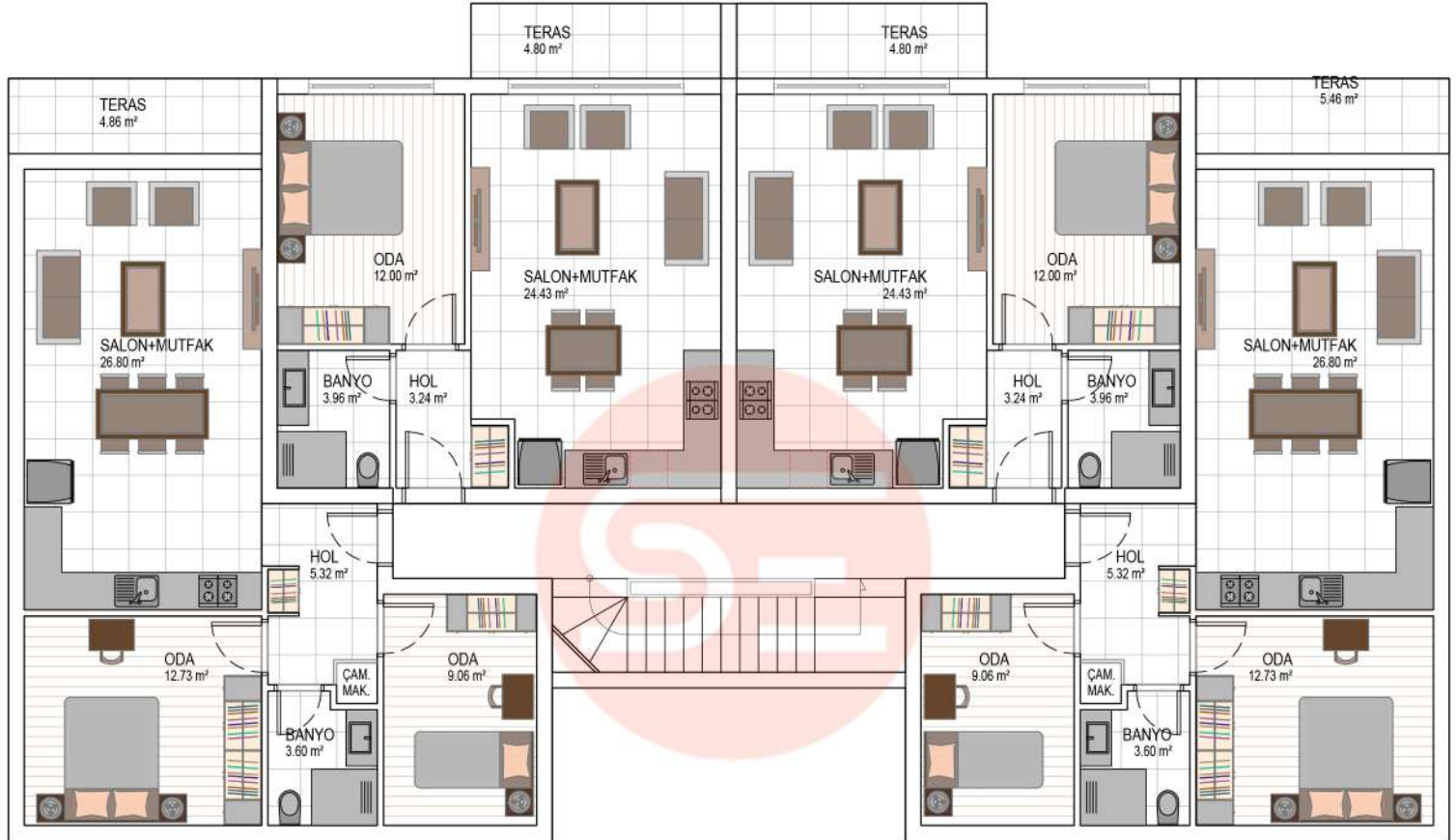
No	Room	Floor	Price
1	3+1	Ground	£220,000
2	3+1	Ground	£220,000
3	2+1	First	£180,000
4	2+1	First	£180,000



**SELECT ESTATES**  
INTERNATIONAL



# A-type Floor Plan

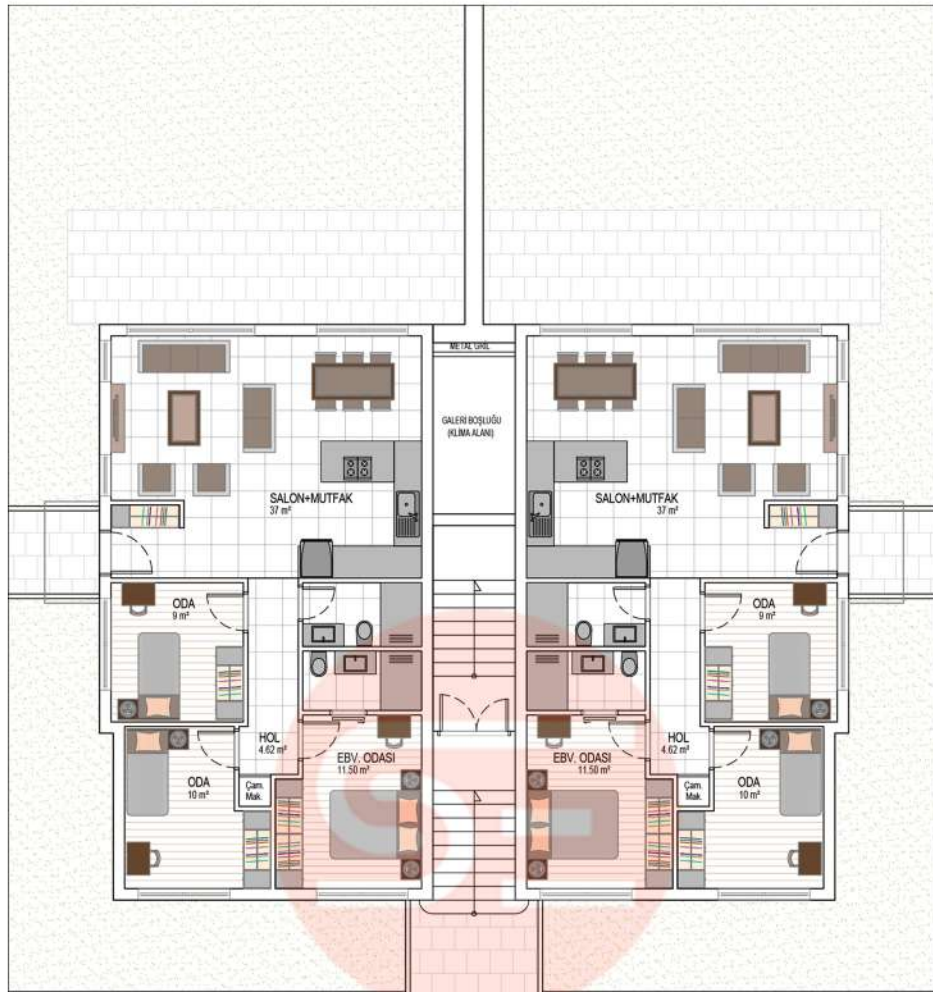


SELECT ESTATES  
INTERNATIONAL

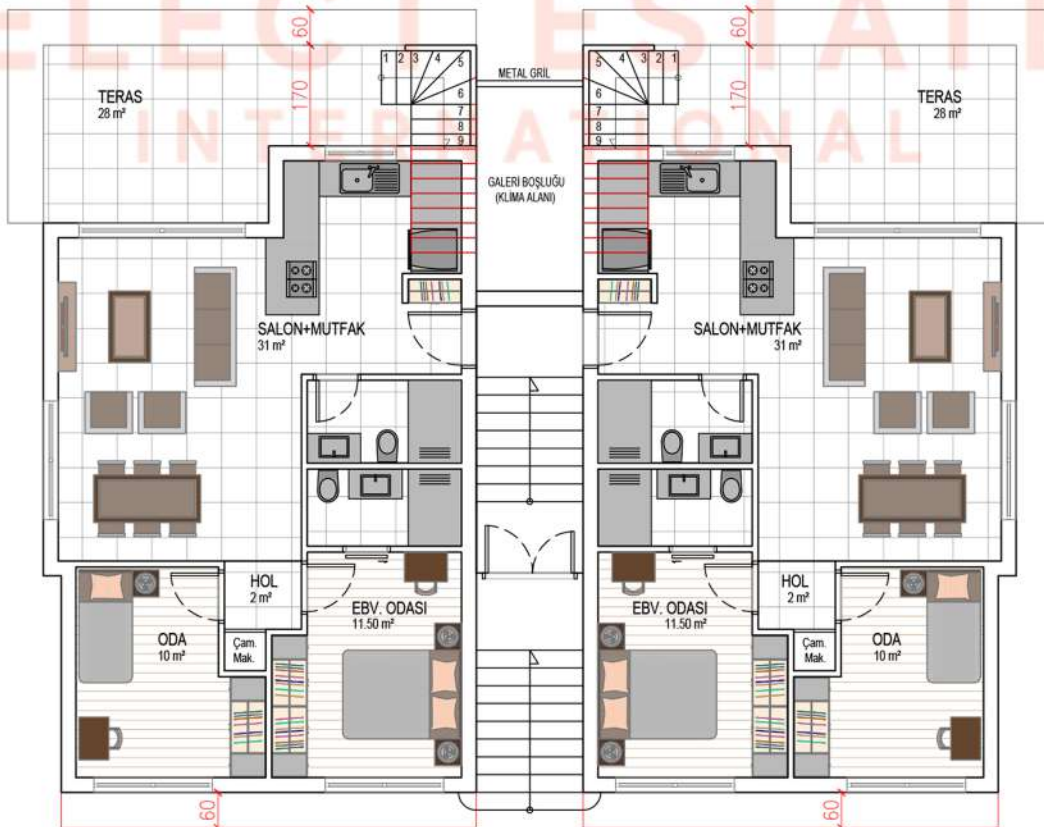


SELECT ESTATES  
INTERNATIONAL

# B-type Floor Plan



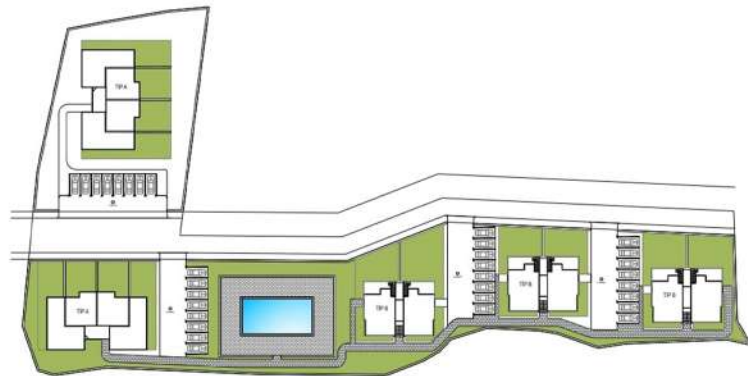
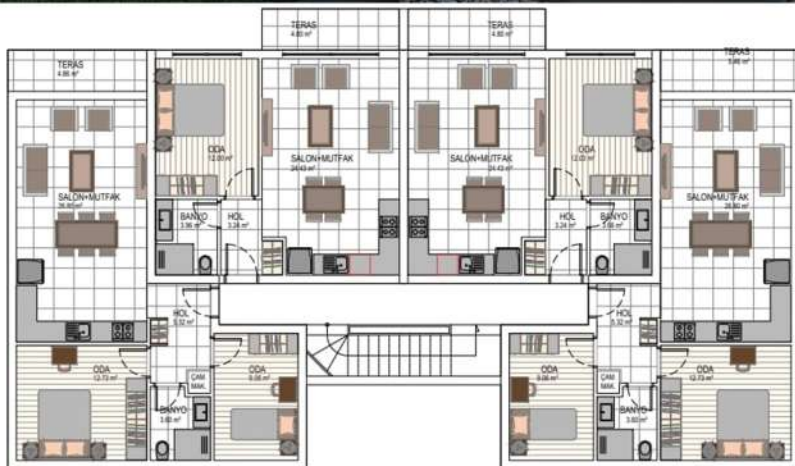
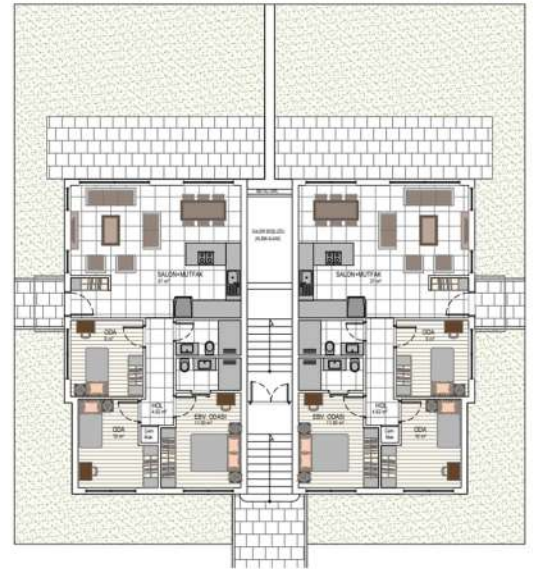
Ground Floor



1. Floor



# Experience premium living in a vibrant expat community. Modern 1, 2 & 3 bedroom apartments await you at North Cyprus.



## Schedule a Viewing at The Lapta Prestige Homes

We are offering a fantastic opportunity for investors to get pre-launch reduced prices and a great potential for mid term capital growth with maximum ROI.



+90 542 856 06 14



The information included is subject to change as per the latest availability and developer announcement.



learn more